

[VIEW WEBPAGE](#)

STYLE #TH1

PRODUCT FEATURES | CARACTÉRISTIQUES

- 100% Anti-pilling polyester fleece with durable water repellent finish
- Made of durable polyester for long-lasting use
- 4" Contrasting colour tape and 2" reflective silver tape increase visibility, making it ideal for traffic and construction work
- Classic crewneck design provides a timeless look
- Rib-knit cuffs and waist ensure a snug and comfortable fit
- 4-way comfort stretch allows for ease of movement and increased comfort
- Dual straps for clip-on radio
- Polaire polyester 100% anti-boulochage avec finition hydrofuge durable
- Fabriqué en polyester durable pour une utilisation prolongée
- Bande de couleur contrastante de 4" et bande réfléchissante argentée de 2" ; Ceci augmente la visibilité, idéal pour les travaux routiers et les chantiers de construction
- Design classique à encolure ronde offre un look intemporel
- Poignets et taille en tricot côtelé assurent un ajustement serré et confortable
- Stretch 4 directions offre une liberté de mouvement et un confort supérieur
- Double sangles pour radio à clipser



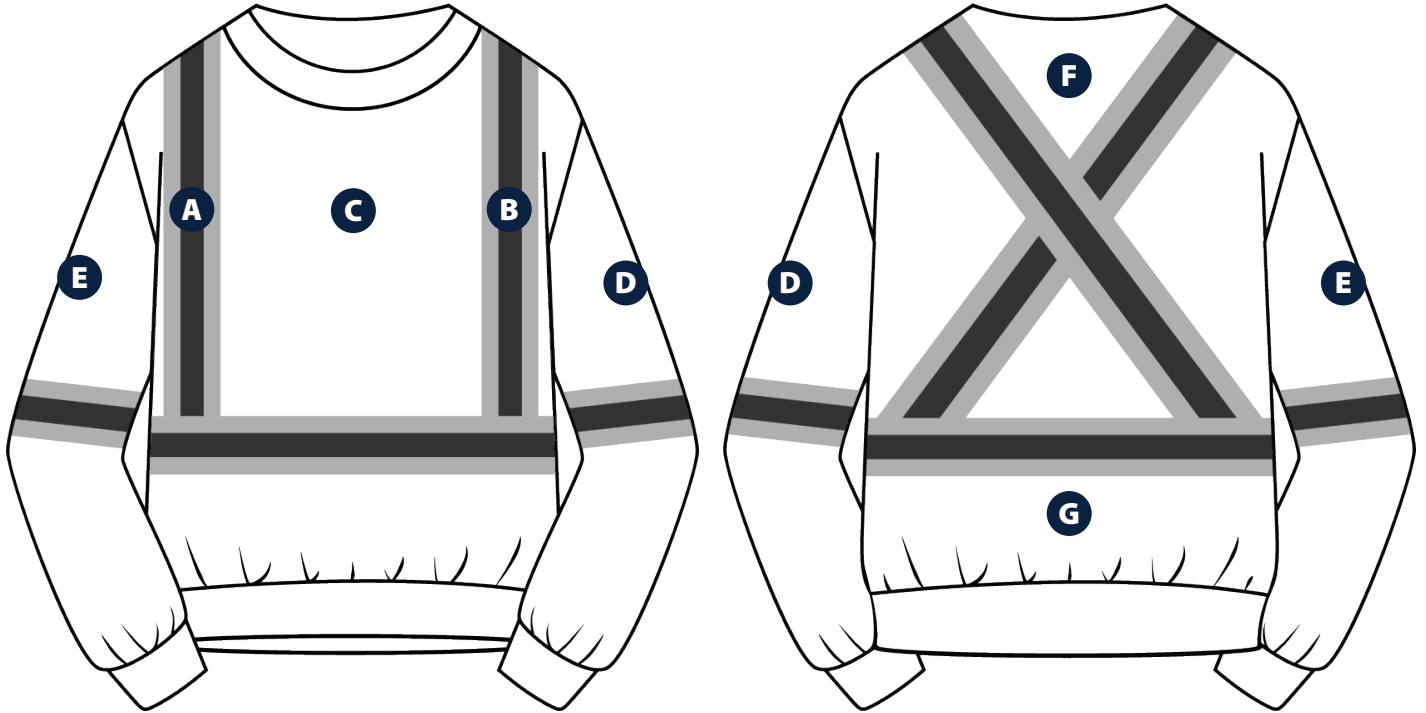
PRODUCT DATA | INFORMATIONS DU PRODUIT

| PRODUCT # DE PRODUIT | CERTIFICATIONS CERTIFICATIONS |
|----------------------|---|
| TH1O | CSA Z96-22 Class 2 - Level 2 Classe 2 - Niveau 2, ANSI/ISEA 107-20 Class 3 Type R Classe 3 - Type R |
| TH1Y | CSA Z96-22 Class 2 - Level 2 Classe 2 - Niveau 2, ANSI/ISEA 107-20 Class 3 Type R Classe 3 - Type R |

| SIZES TAILLES | Individual Pack Paquet individuel | | Master Carton Carton robuste | | Packaging Emballage |
|-----------------|-------------------------------------|--------|--------------------------------|--------|-----------------------|
| | Dimensions | Weight | Dimensions | Weight | |
| S P | 22" x 15" x 1.2" | 0.62kg | 22" x 12.6" x 9.8" | 7kg | 10/Case 10/Caisse |
| M M | 22.8" x 15" x 1.2" | 0.63kg | 22" x 12.6" x 9.8" | 7.28kg | 10/Case 10/Caisse |
| L G | 24" x 15" x 1.2" | 0.65kg | 22" x 12.6" x 9.8" | 7.75kg | 10/Case 10/Caisse |
| XL TG | 25" x 15.4" x 1.2" | 0.68kg | 22" x 12.6" x 9.8" | 8kg | 10/Case 10/Caisse |
| 2XL 2TG | 26.4" x 15.4" x 1.2" | 0.76kg | 22" x 13.4" x 9.8" | 8.25kg | 10/Case 10/Caisse |
| 3XL 3TG | 27" x 16" x 1.2" | 0.79kg | 22" x 13.4" x 9.8" | 9.13kg | 10/Case 10/Caisse |
| 4XL 4TG | 28" x 16.5" x 1.2" | 0.82kg | 22" x 13.4" x 9.8" | 9.57kg | 10/Case 10/Caisse |
| 5XL 5TG | 28.7" x 17" x 1.2" | 0.87kg | 22" x 13.4" x 9.8" | 9.78kg | 10/Case 10/Caisse |

Please note: If measurement falls between sizes, go with the larger size. Prenez note: Si la mesure tombe entre 2 tailles, optez pour la plus grande.

HI-VISIBILITY CREWNECK SWEATSHIRT
CHANDAIL À ENCOLURE RONDE HAUTE VISIBILITÉ



SIZE CHART | TABLEAU DES TAILLES

| MEASUREMENT MESURES | S P | M M | L G | XL TG | 2XL 2TG | 3XL 3TG | 4XL 4TG | 5XL 5TG |
|---|-------|-------|-------|---------|-----------|-----------|-----------|-----------|
| CHEST POITRINE | 24" | 25" | 26" | 27" | 28" | 29" | 30" | 31" |
| LENGTH LONGUEUR <small>(High Point of Shoulder to Bottom Cuff)</small> | 27" | 28" | 29" | 30" | 31" | 32" | 32.5" | 33" |
| SLEEVE MANCHE <small>(High Point of Shoulder to Bottom Cuff)</small> | 30.5" | 31.5" | 32.5" | 33.5" | 34.5" | 35.5" | 36.5" | 37.5" |

CUSTOMIZATION | PERSONALISATION

| LOCATION EMPLACEMENT | MAXIMUM SIZE TAILLE MAXIMALE | | |
|-------------------------|------------------------------------|---------------------------------------|------------------------|
| | SCREEN PRINT IMPRESSION D'ÉCRAN | HEAT TRANSFER TRANSFERT DE CHALEUR | EMBROIDERY BRODERIE |
| A | N/A | N/A | 4"W x 4"H |
| B | N/A | N/A | 4"W x 4"H |
| C | 6"W x 6"H | 6"W x 6"H | 6"W x 6"H |
| D | 4"W x 6"H | 4"W x 6"H | 4"W x 6"H |
| E | 4"W x 6"H | 4"W x 6"H | 4"W x 6"H |
| F | 3"W x 3"H | 3"W x 3"H | 3"W x 3"H |
| G | 14"W x 3"H | 14"W x 3"H | 14"W x 3"H |

LEARN MORE ABOUT CUSTOMIZATION OPTIONS